



Discover the **DYNAMIC AND STATIC COMMUNICATION** Solutions

FLEX proposes itself as a partner to provide visibility with the help of its luminous panels in dynamic and static version.

Why is it essential to have an impactful communication system?

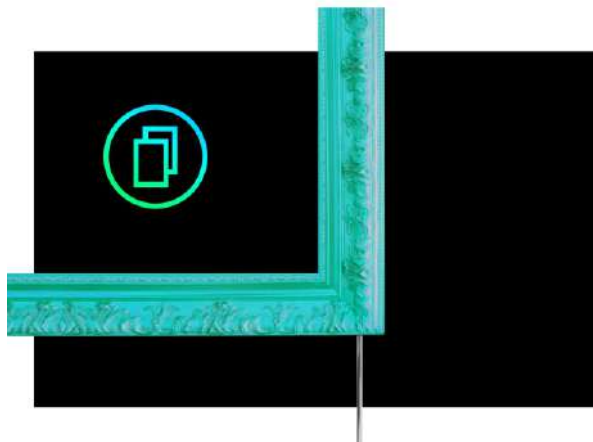
- 1 - to **attract the attention of the customers** within your business;
- 2 - to **create a customer emotion and experience**;
- 3 - to **ensure adequate and effective communication** to your business;
- 4 - for a **constant update of your communications**;
- 5 - to **make your environment more dynamic and lively**;
- 6 - to communicate **images, products and promotions**;
- 7 - to **furnish your environment in an innovative and dynamic way**.

The Plus



Simple uploading of content

MEDIA CHROME® and **MEDIA TOTEM** offers immediate and dynamic options for uploading multimedia content. You can use the USB port simply by inserting the device into the panel or choose the LAN connection, in order to start the remote upload. Finally, in the version with NUC, with Windows operating system it is possible to connect all compatible devices to load the contents.



Accessories: Magnetic Frame

MEDIA CHROME® and **LED CHROME** products can be enriched with original colored or bright RGB frames, fixed with discreet magnets. **The COLOR FRAME** frames can be removed or replaced in a few moments, and are available in 2 versions: wood with a smooth or embellished surface and in an RGB luminous version.



Semplice e rapido cambio del messaggio

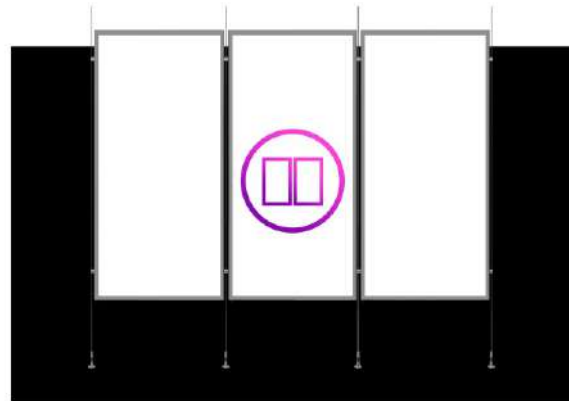
A transparent methacrylate sheet combined with a magnetic strip along the sides allows easy opening and guarantees hermetic closure. **By lifting the magnetic frame, the LED CHROME system allows a quick replacement of the poster: open, remove and replace.**

The Plus



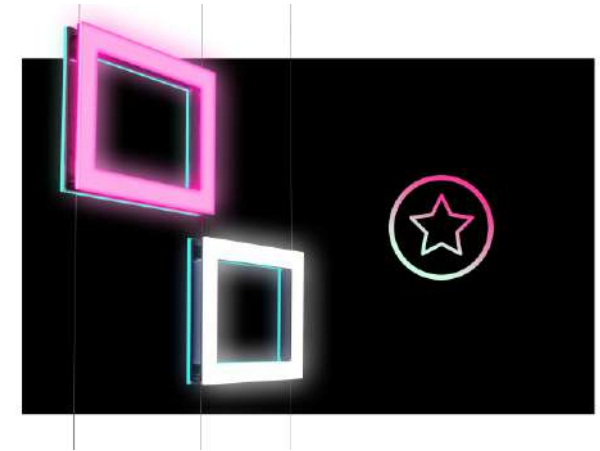
Solutions suspended on low voltage cables or stylus

MEDIA CHROME® and **LED CHROME** products are characterized by a **low voltage power supply, an additional guarantee of safety**. Their fixing on cables or stylus guarantees a light and dynamic design to the product, which can be installed anywhere, inside and in shop windows.



Componible systems to create compositions

LED CHROME with its unique characteristics, **allows you to create real compositions and sets**. Thanks to its system on cables and tensioners, it is possible to combine several panels, both vertically and horizontally, **creating highly visible compositions**.

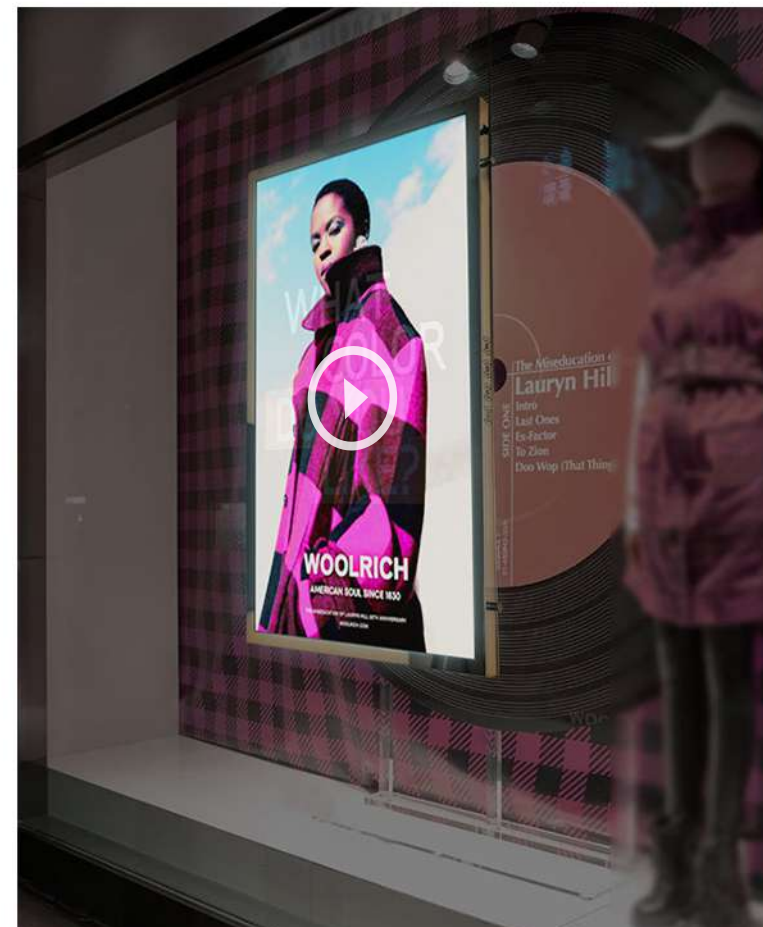
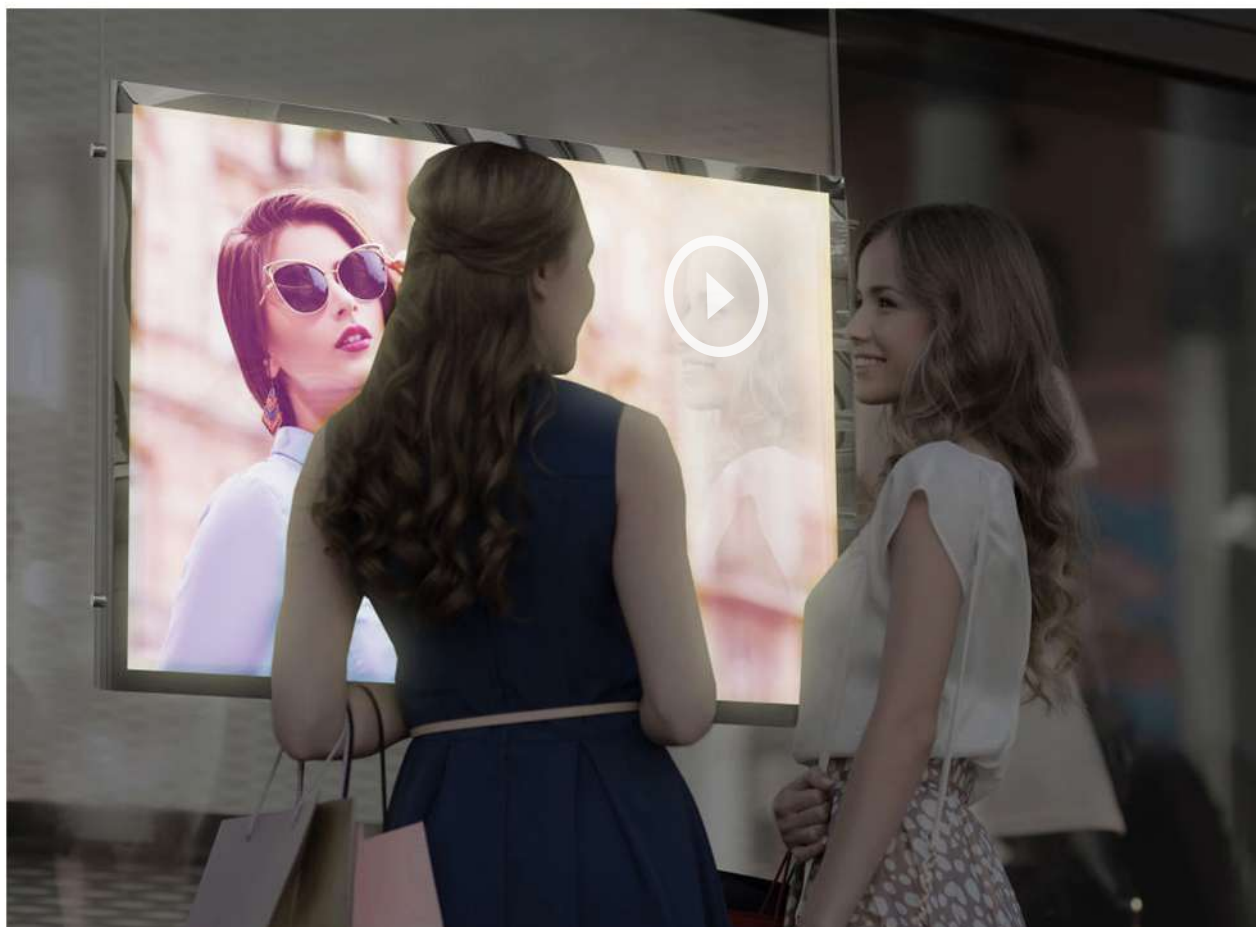


Modern and elegant design

The **dynamic and static FLEX solutions are designed specifically for your communication**. Elegant and discreet solutions that can be positioned in any environment, guaranteeing a remarkable visual impact. Our designers study how to make products more and more performing, resistant, aesthetically pleasing and flexible on a functional level.

You're looking at MEDIA CHROME®

MEDIA CHROME® digital panel is designed for use in all environments, such as **banks, shops, hotels, museums, airports, restaurants, public bodies, shopping centers, companies...**

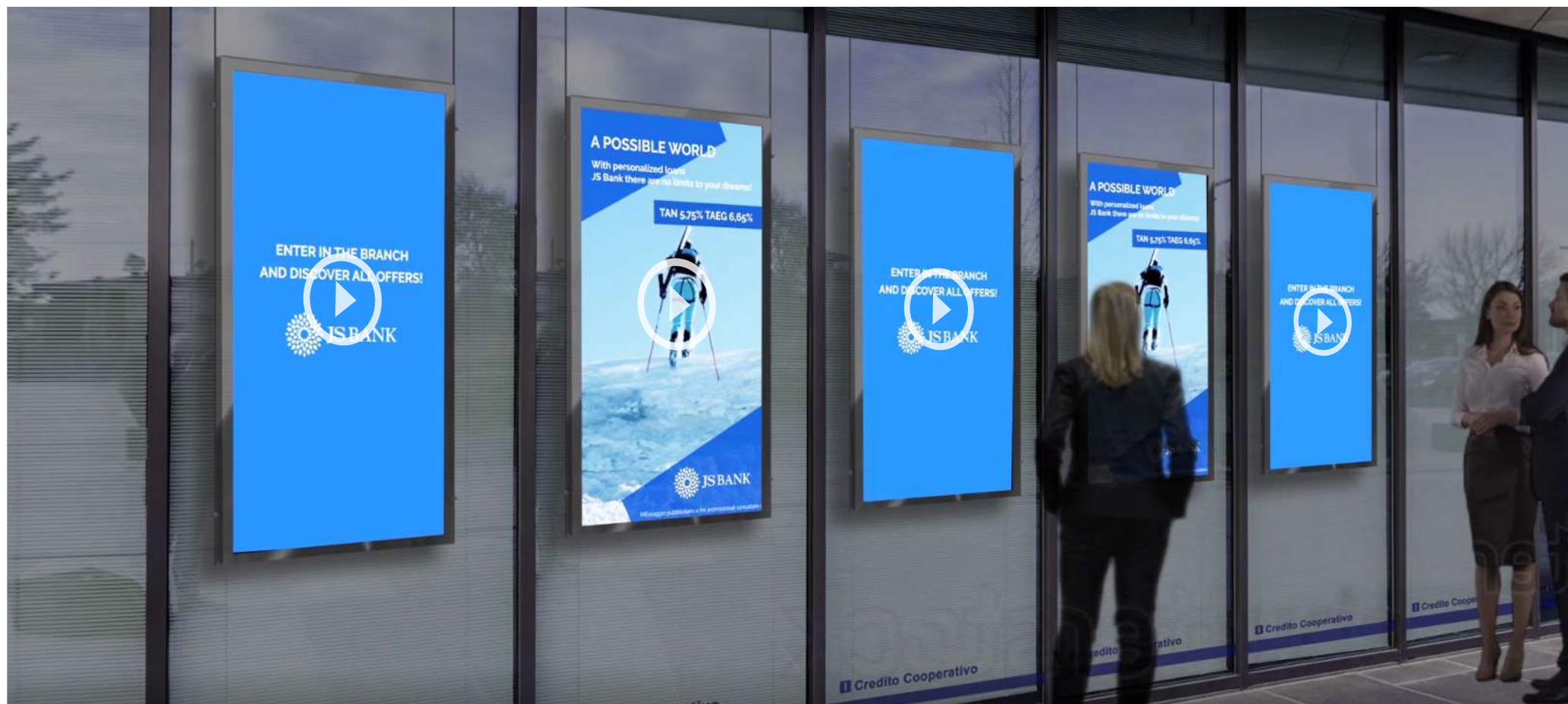


Features:

- **attract the attention of customers** within your business; - **create a customer emotion and experience**; - guarantee **adequate and effective communication to your customers**; - constantly **update your communications**; - communicate **images, products and promotions**; - make your showcase more **dynamic and lively**.

You're looking at **MEDIA CHROME®**

MEDIA CHROME® digital panel is designed for use in all environments, such as **banks, shops, hotels, museums, airports, restaurants, public bodies, shopping centers, companies...**



Features:

- **attract the attention of customers** within your business; - **create a customer emotion and experience**; - guarantee **adequate and effective communication to your customers**; - constantly **update your communications**; - communicate **images, products and promotions**; - make your showcase more **dynamic and lively**.

You're looking at **MEDIA CHROME®**

MEDIA CHROME® digital panel is designed for use in all environments, such as **banks, shops, hotels, museums, airports, restaurants, public bodies, shopping centers, companies...**

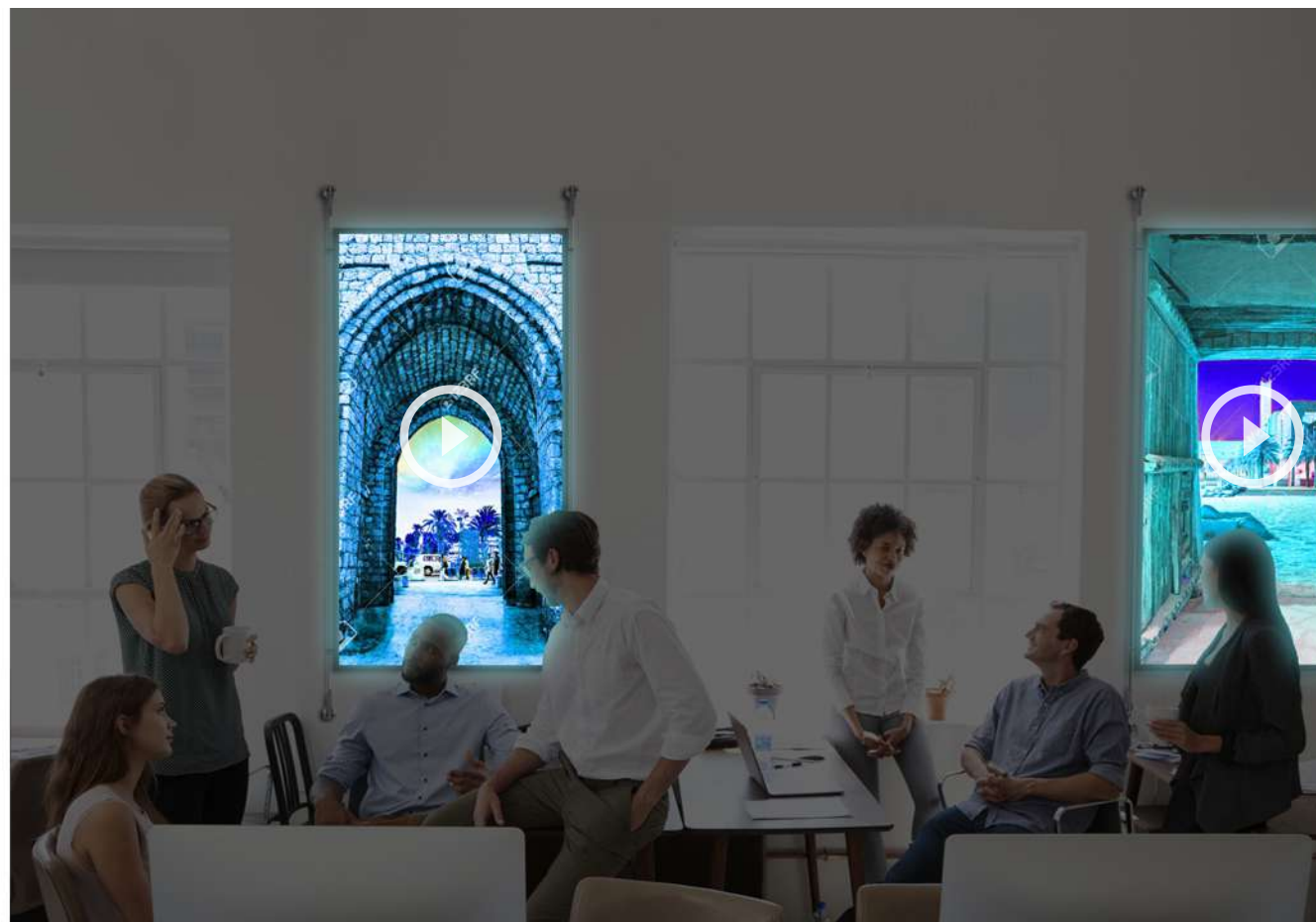


Features:

- attract the attention of customers within your business; - create a customer emotion and experience; - guarantee adequate and effective communication to your customers; - constantly update your communications; - communicate images, products and promotions; - make your showcase more dynamic and lively.

You're looking at **MEDIA CHROME® with MAGNETIC WOODEN FRAME**

MEDIA CHROME® digital panel is designed for use in all environments, such as **banks, shops, hotels, museums, airports, restaurants, public bodies, shopping centers, companies...**



Features:

- **attract the attention of customers** within your business;
- **create emotion and experience**;
- guarantee **adequate and effective communication to your customers**;
- constantly **update your communications**;
- communicate **images, products and promotions**;
- make your environment more **dynamic and lively**;
- **furnish your environment** in an innovative and dynamic way.

You're looking at MEDIA CHROME® mounted on DISPLAY UNIT (self-supporting structure)

MEDIA CHROME® digital panel is designed for use in all environments, such as **banks, shops, hotels, museums, airports, restaurants, public bodies, shopping centers, companies, subways, railways...**

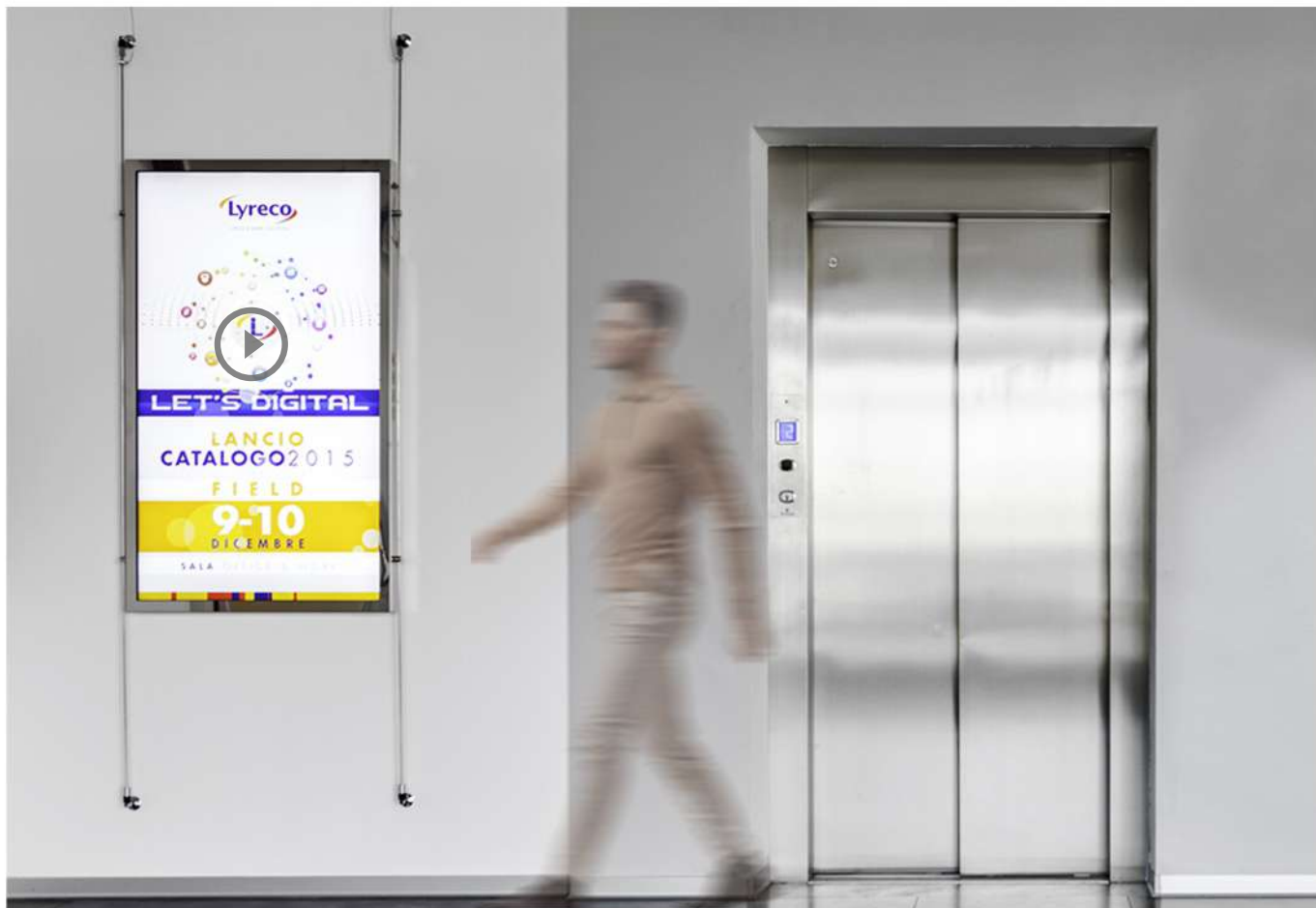


Features:

- **create emotion and experience;** - guarantee **adequate and effective communication to your customers;** - constantly **update your communications;**
- communicate **images, products and promotions, train / plane schedules etc.;** - make your environment more **dynamic and lively.**

You're looking at **MEDIA CHROME®**

MEDIA CHROME® digital panel is designed for use in all environments, such as **banks, shops, hotels, museums, airports, restaurants, public bodies, shopping centers, companies, subways, railways...**



Features:

- **create emotion and experience;** - guarantee **adequate and effective communication to your customers;** - constantly **update your communications;**
- communicate **images, products and promotions, train / plane schedules etc.;** - make your environment more **dynamic and lively.**

You're looking at MEDIA CHROME® mounted on DISPLAY UNIT (self-supporting structure)

MEDIA CHROME® digital panel is designed for use in all environments, such as **banks, shops, hotels, museums, airports, restaurants, public bodies, shopping centers, companies, subways, railways...**



Features:

- create emotion and experience;
- guarantee adequate and effective communication to your customers;
- constantly update your communications;
- communicate images, products and promotions, train / plane schedules etc.;
- make your environment more dynamic and lively.

You're looking at MEDIA TOTEM

MEDIA TOTEM digital freestanding totem is designed for use in all environments, such as **banks, shops, hotels, museums, airports, restaurants, public bodies, shopping centers, companies, pharmacies...**

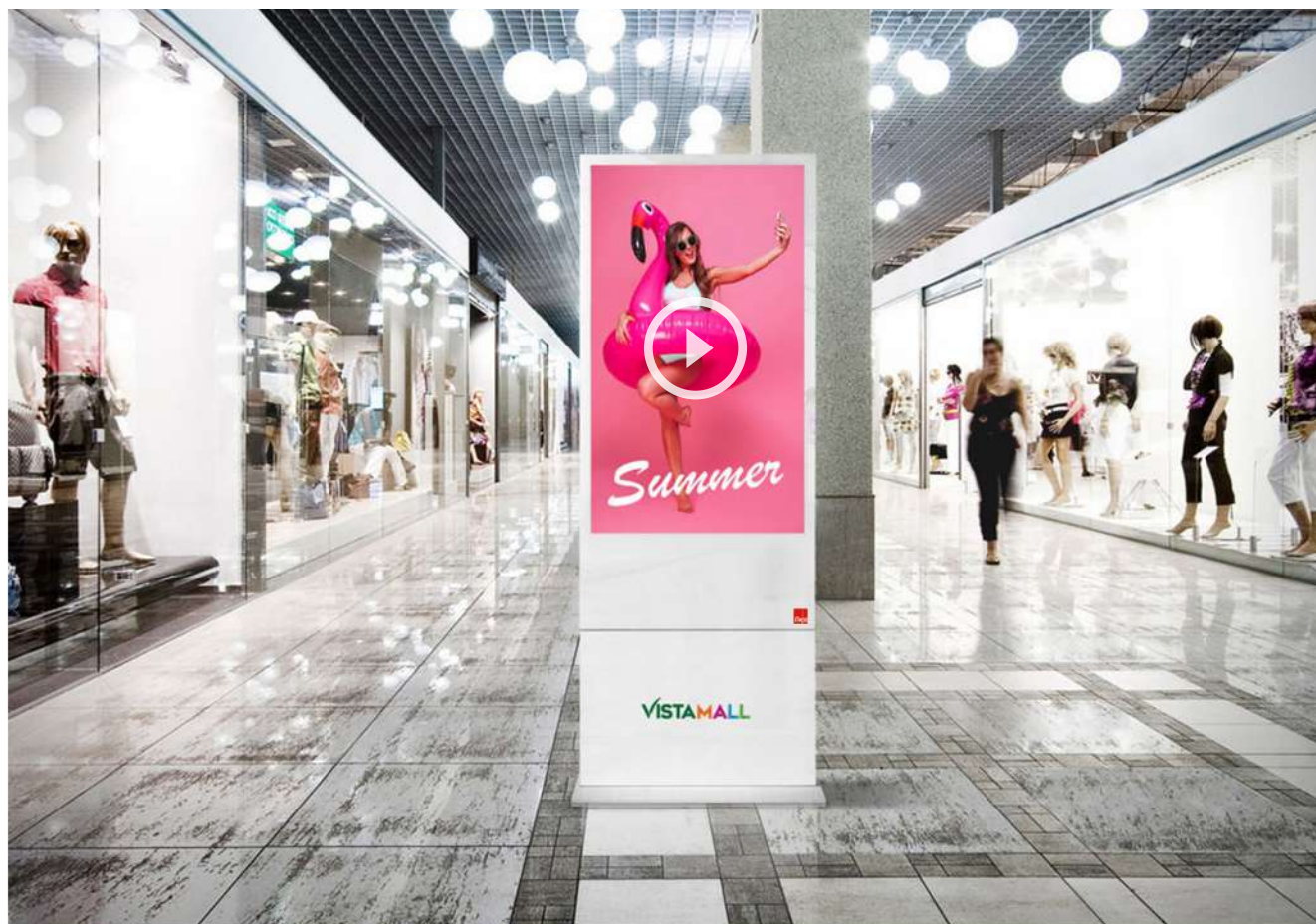


Features:

- **attract the attention of customers** within your business;
- **create emotion and experience**;
- guarantee **adequate and effective communication to your customers**;
- constantly **update your communications**;
- communicate **images, products and promotions**;
- make your environment more **dynamic and lively**;
- **furnish your environment** in an innovative and dynamic way.

You're looking at **MEDIA TOTEM**

MEDIA TOTEM digital freestanding totem is designed for use in all environments, such as **banks, shops, hotels, museums, airports, restaurants, public bodies, shopping centers, companies...**

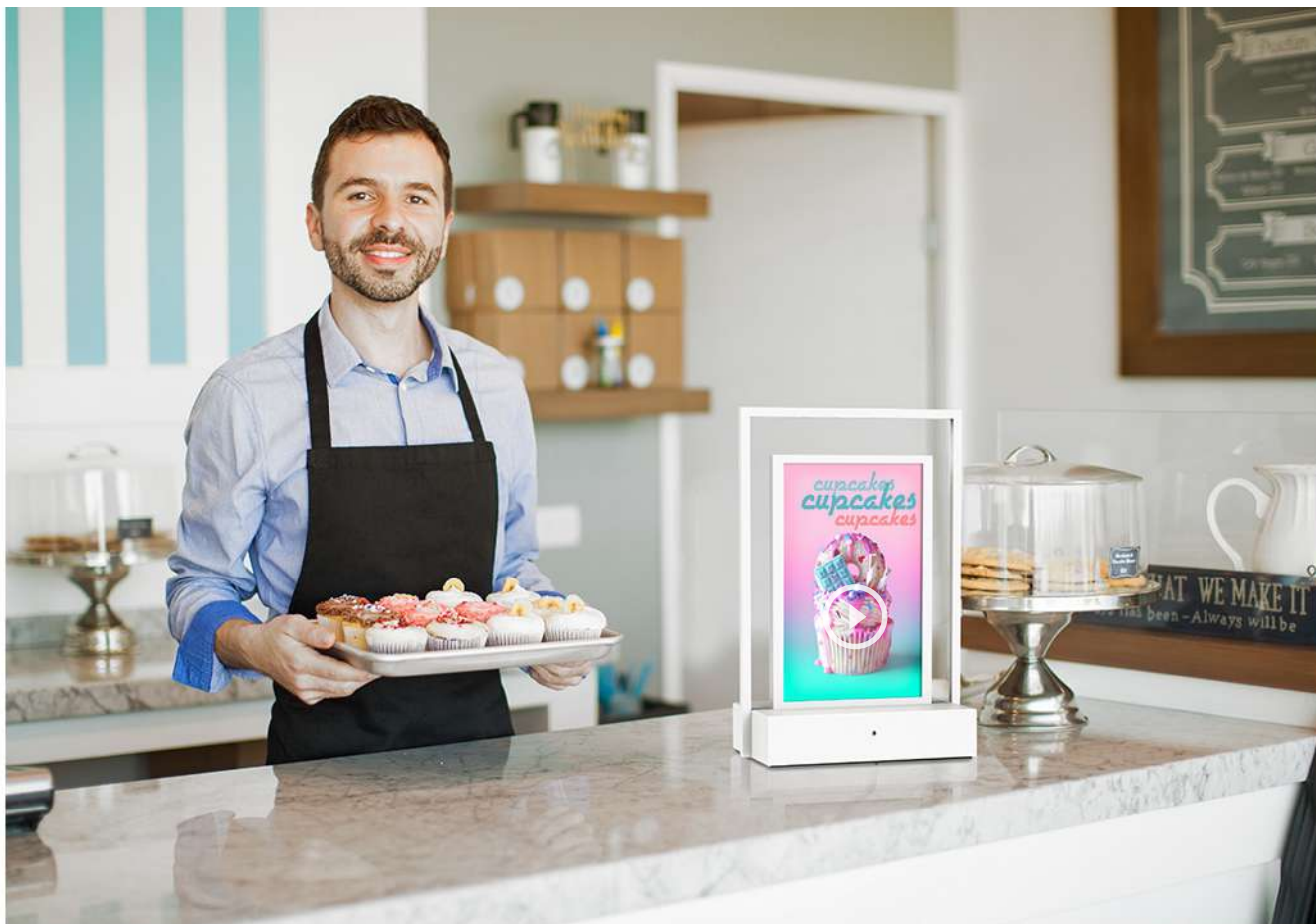


Features:

- **attract the attention of customers** within your business;
- **create emotion and experience**;
- **guarantee adequate and effective communication to your customers**;
- **constantly update your communications**;
- **communicate images, products and promotions**;
- **make your environment more dynamic and lively**;
- **furnish your environment** in an innovative and dynamic way.

You're looking at PAGEANT®

PAGEANT® digital table display is designed for use in all environments, such as **restaurants, clubs, hotels, shops banks, museums, airports, public bodies, companies, offices, pharmacies...**

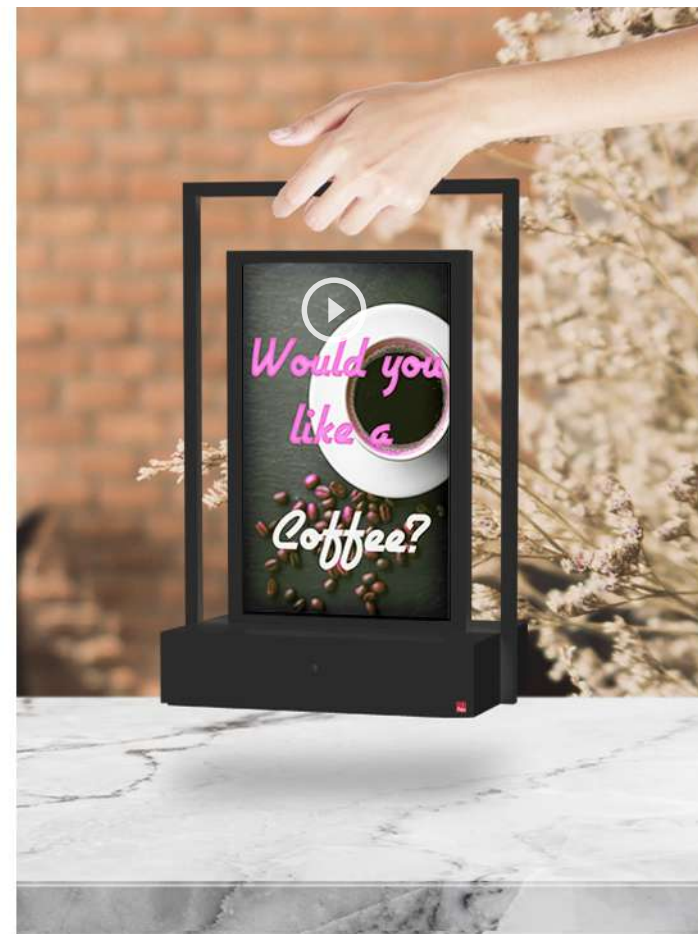


Features:

- **attract the attention of customers;** - **create emotion and experience;** - guarantee **adequate and effective communication to your customers;**
- constantly **update your communications;** - communicate **images, products and promotions;** - make your environment more **dynamic and lively;**
- **furnish your environment** in an innovative and dynamic way.

You're looking at PAGEANT®

PAGEANT® digital table display is designed for use in all environments, such as **restaurants, clubs, hotels, shops banks, museums, airports, public bodies, companies, offices, pharmacies...**

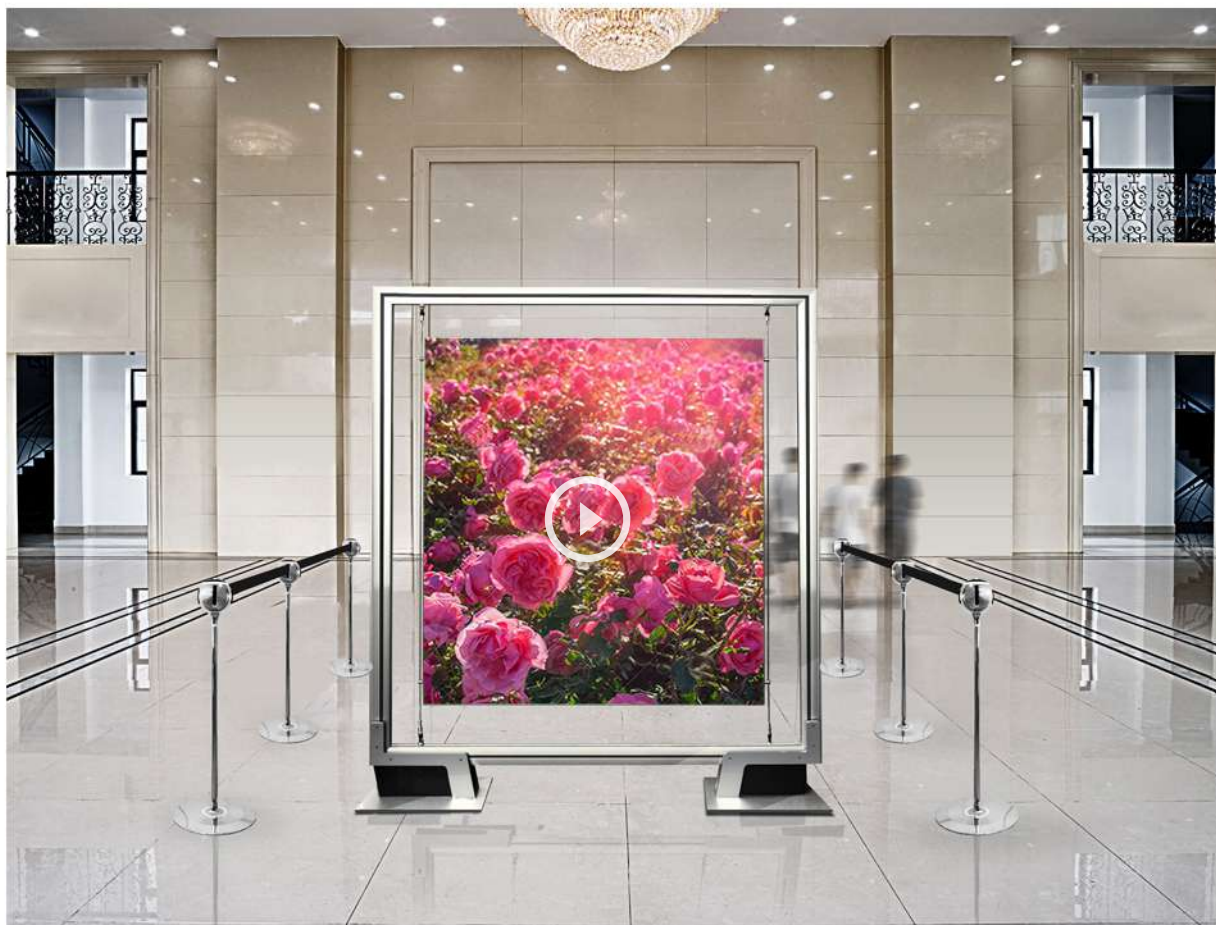


Features:

- **attract the attention of customers;** - **create emotion and experience;** - guarantee **adequate and effective communication to your customers;**
- constantly **update your communications;** - communicate **images, products and promotions;** - make your environment more **dynamic and lively;**
- **furnish your environment** in an innovative and dynamic way.

You're looking at SCREENFLEX® mounted on DISPLAY UNIT (self-supporting structure)

SCREENFLEX® led screen suspended on stylus is designed for use in all environments, such as **shops, banks, hotels, museums, airports, restaurants, public bodies, shopping centers...**

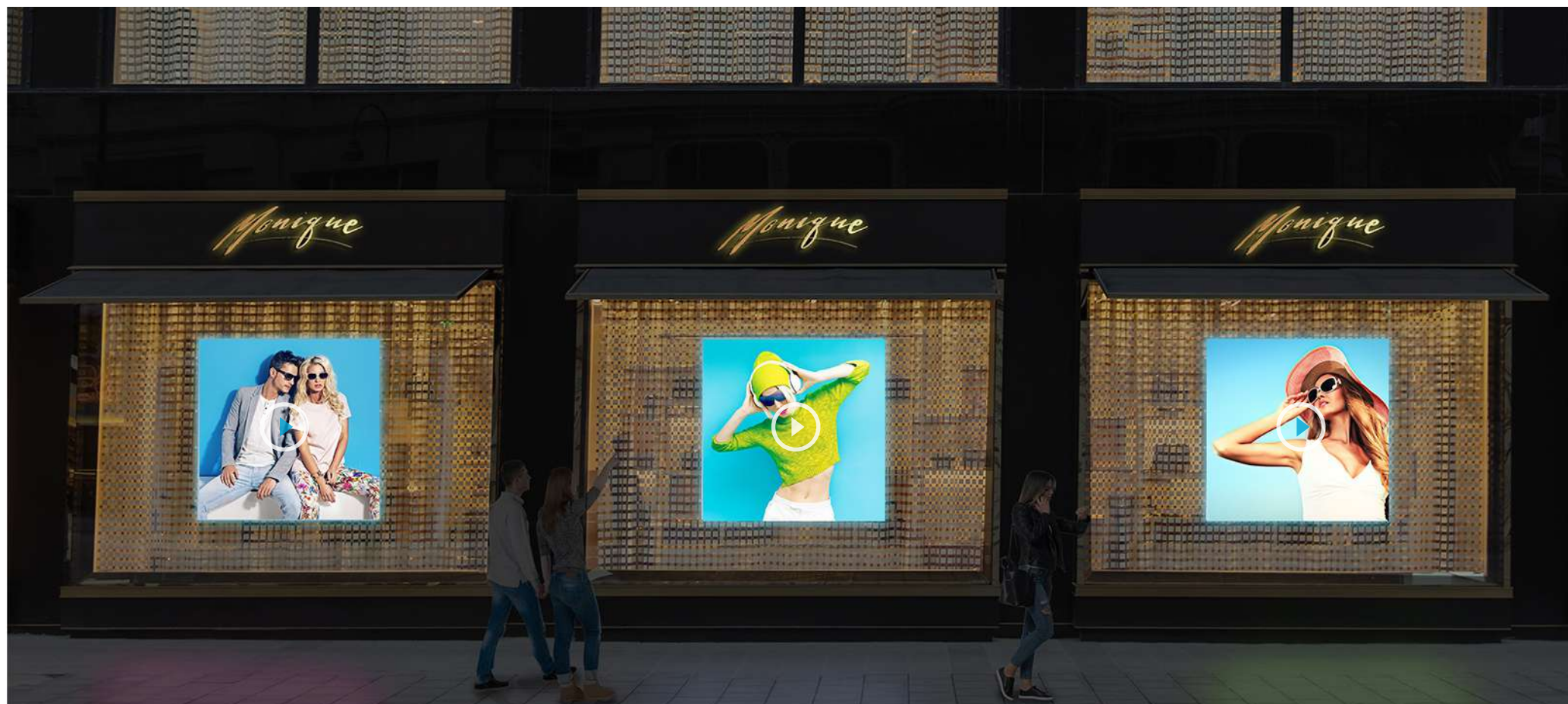


Features:

- **attract the attention of customers** within your business; - **create emotion and experience**; - guarantee **adequate and effective communication to your customers**;
- constantly **update your communications**; - communicate **images, products and promotions**; - make your environment more **dynamic and lively**;
- **furnish your environment** in an innovative and dynamic way.

You're looking at SCREENFLEX®

SCREENFLEX® led screen suspended on stylus is designed for use in all environments, such as **shops, banks, public bodies, hotels, restaurants, clubs, shopping centers, pharmacies...**

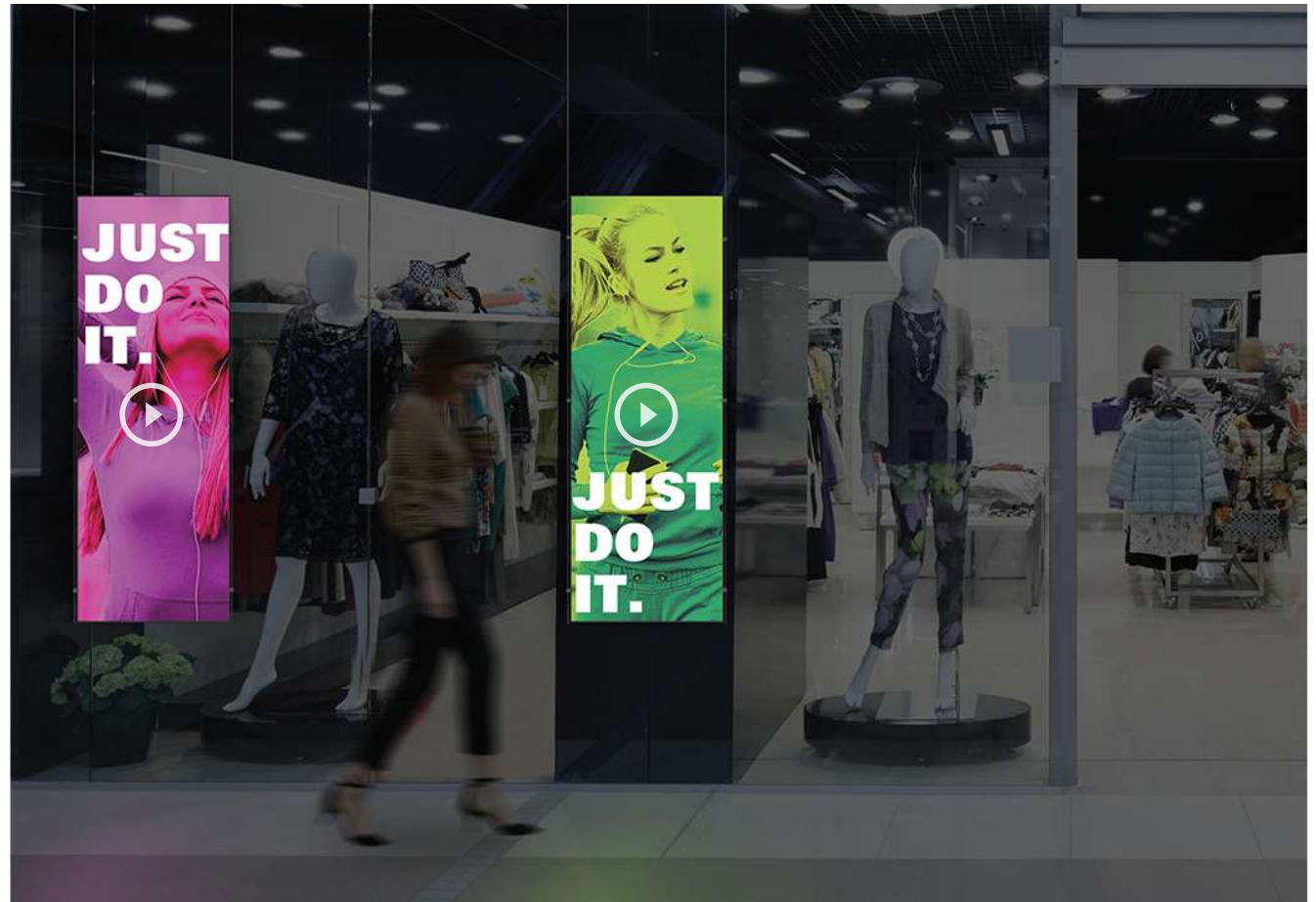


Features:

- **attract the attention of customers** within your business;
- **create emotion and experience**;
- guarantee **adequate and effective communication to your customers**;
- constantly **update your communications**;
- communicate **images, products and promotions**;
- make your environment more **dynamic and lively**.

You're looking at SCREENFLEX®

SCREENFLEX® led screen suspended on stylus is designed for use in all environments, such as **shops, banks, public bodies, hotels, restaurants, clubs, shopping centers, pharmacies...**



Features:

- **attract the attention of customers** within your business;
- **create emotion and experience**;
- guarantee **adequate and effective communication to your customers**;
- constantly **update your communications**;
- communicate **images, products and promotions**;
- make your environment more **dynamic and lively**.

You're looking at MEDIA CHROME® with MAGNETIC WOODEN FRAME

MEDIA CHROME® digital panel is designed for use in all environments, such as **banks, shops, hotels, museums, airports, restaurants, public bodies, shopping centers, companies...**



Features:

- **attract the attention of customers** within your business;
- **create emotion and experience**; - guarantee **adequate and effective communication to your customers**;
- constantly **update your communications**;
- communicate **images, products and promotions**;
- make your environment more **dynamic and lively**;
- **furnish your environment** in an innovative and dynamic way.

You're looking at **MEDIA CHROME® with MAGNETIC WOODEN FRAME**

MEDIA CHROME® digital panel is designed for use in all environments, such as **banks, shops, hotels, museums, airports, restaurants, public bodies, shopping centers, companies...**



Features:

- **attract the attention of customers;** - **create emotion and experience;** - guarantee **adequate and effective communication to your customers;**
- constantly **update your communications;** - communicate **images, events and information;** - make your environment more **dynamic and lively;**
- **furnish your environment** in an innovative and dynamic way.

You're looking at MEDIA CHROME® with MAGNETIC WOODEN FRAME and DISPLAY UNIT self-supporting structure

MEDIA CHROME® digital panel is designed for use in all environments, such as **banks, shops, hotels, museums, airports, restaurants, public bodies, shopping centers, companies...**



Features:

- **attract the attention of customers;** - **create emotion and experience;** - guarantee **adequate and effective communication to your customers;**
- constantly **update your communications;** - communicate **images, events and information;** - make your environment more **dynamic and lively;**
- **furnish your environment** in an innovative and dynamic way.

You're looking at **MEDIA CHROME® with MAGNETIC WOODEN FRAME**

MEDIA CHROME® digital panel is designed for use in all environments, such as **meeting room, offices, banks, shops, hotels, restaurants, public bodies, companies, waiting rooms...**



Features:

- **create emotion and experience;** - guarantee **adequate and effective communication to your customers;** - constantly **update your communications;**
- communicate **images, events and information;** - make your environment more **dynamic and lively;**
- **furnish your environment** in an innovative and dynamic way.

You're looking at LED CHROME

LED CHROME suspended luminous panel is designed for use in all environments, such as **meeting room, offices, banks, shops, hotels, restaurants, public bodies, companies, waiting rooms, break rooms, shopping centers...**



Features:

- **attract the attention of customers;** - **create emotion and experience;** - guarantee **adequate and effective communication to your customers;**
- constantly **update your communications;** - communicate **images, events and information;** - make your environment more **dynamic and lively;**
- **furnish your environment** in an innovative and dynamic way.

You're looking at LED CHROME

LED CHROME suspended luminous panel is designed for use in all environments, such as **reception, meeting room, offices, banks, shops, hotels, restaurants, public bodies, companies, waiting rooms, break rooms, shopping centers...**



Features:

- **attract the attention of customers;** - **create emotion and experience;** - guarantee **adequate and effective communication to your customers;**
- constantly **update your communications;** - communicate **images, events and information;** - make your environment more **dynamic and lively;**
- **furnish your environment** in an innovative and dynamic way.

You're looking at LED CHROME

LED CHROME suspended luminous panel is designed for use in all environments, such as **reception, meeting room, offices, banks, shops, hotels, restaurants, public bodies, companies, waiting rooms, break rooms, shopping centers...**



Features:

- **attract the attention of customers;** - **create emotion and experience;** - guarantee **adequate and effective communication to your customers;**
- constantly **update your communications;** - communicate **images, events and information;** - make your environment more **dynamic and lively;**
- **furnish your environment** in an innovative and dynamic way.

You're looking at LED CHROME

LED CHROME suspended luminous panel is designed for use in all environments, such as **reception, meeting room, offices, banks, shops, hotels, restaurants, public bodies, companies, waiting rooms, break rooms, shopping centers...**

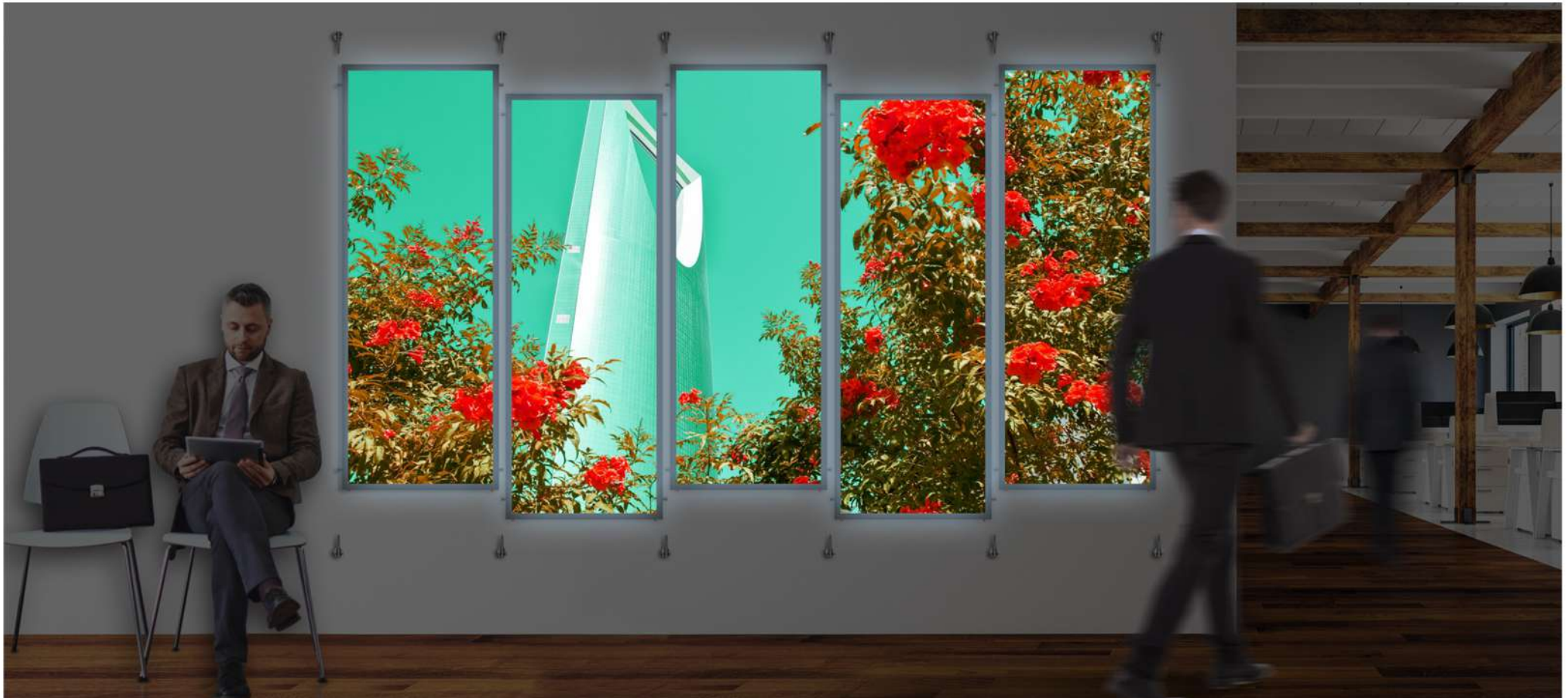


Features:

- **attract the attention of customers;** - **create emotion and experience;** - guarantee **adequate and effective communication to your customers;**
- constantly **update your communications;** - communicate **images, events and information;** - make your environment more **dynamic and lively;**
- **furnish your environment** in an innovative and dynamic way.

You're looking at LED CHROME

LED CHROME suspended luminous panel is designed for use in all environments, such as **reception, meeting room, offices, banks, shops, hotels, restaurants, public bodies, companies, waiting rooms, break rooms, shopping centers...**



Features:

- **attract the attention of customers;** - **create emotion and experience;** - guarantee **adequate and effective communication to your customers;**
- constantly **update your communications;** - communicate **images, events and information;** - make your environment more **dynamic and lively;**
- **furnish your environment** in an innovative and dynamic way.

You're looking at LED CHROME

LED CHROME suspended luminous panel is designed for use in all environments, such as **reception, meeting room, offices, banks, shops, hotels, restaurants, public bodies, companies, waiting rooms, break rooms, shopping centers...**



Features:

- **attract the attention of customers;** - **create emotion and experience;** - guarantee **adequate and effective communication to your customers;**
- constantly **update your communications;** - communicate **images, events and information;** - make your environment more **dynamic and lively;**
- **furnish your environment** in an innovative and dynamic way.

You're looking at LED CHROME

LED CHROME suspended luminous panel is designed for use in all environments, such as **reception, meeting room, offices, banks, shops, hotels, restaurants, public bodies, companies, waiting rooms, break rooms, shopping centers...**



Features:

- **attract the attention of customers;** - **create emotion and experience;** - guarantee **adequate and effective communication to your customers;**
- constantly **update your communications;** - communicate **images, events and information;** - make your environment more **dynamic and lively;**
- **furnish your environment** in an innovative and dynamic way.

You're looking at LED CHROME

LED CHROME suspended luminous panel is designed for use in all environments, such as **reception, meeting room, offices, banks, shops, hotels, restaurants, public bodies, companies, waiting rooms, break rooms, shopping centers...**



Features:

- **attract the attention of customers;** - **create emotion and experience;** - guarantee **adequate and effective communication to your customers;**
- constantly **update your communications;** - communicate **images, events and information;** - make your environment more **dynamic and lively;**
- **furnish your environment** in an innovative and dynamic way.

You're looking at LED CHROME

LED CHROME suspended luminous panel is designed for use in all environments, such as **reception, meeting room, offices, banks, shops, hotels, restaurants, public bodies, companies, waiting rooms, break rooms, shopping centers...**



Features:

- **attract the attention of customers;** - **create emotion and experience;** - guarantee **adequate and effective communication to your customers;**
- constantly **update your communications;** - communicate **images, events and information;** - make your environment more **dynamic and lively;**
- **furnish your environment** in an innovative and dynamic way.

You're looking at MINI LED

MINI LED suspended luminous panel is designed for use in all environments, such as **real estate agencies, travel agencies, offices, banks, shops, hotels, restaurants, public bodies, companies, break rooms, shopping centers ...**



Features:

- **attract the attention of customers;** - **create emotion and experience;** - **guarantee adequate and effective communication to your customers;**
- **constantly update your communications;** - **communicate images, events and information;** - **make your environment more dynamic and lively;**
- **furnish your environment** in an innovative and dynamic way.

You're looking at **LUMINOUS FRAME**

LUMINOUS FRAME RGB suspended frame (low voltage) is designed for use in all environments, such as **shops, banks, airport, companies, restaurants, clubs, hotels, offices...**

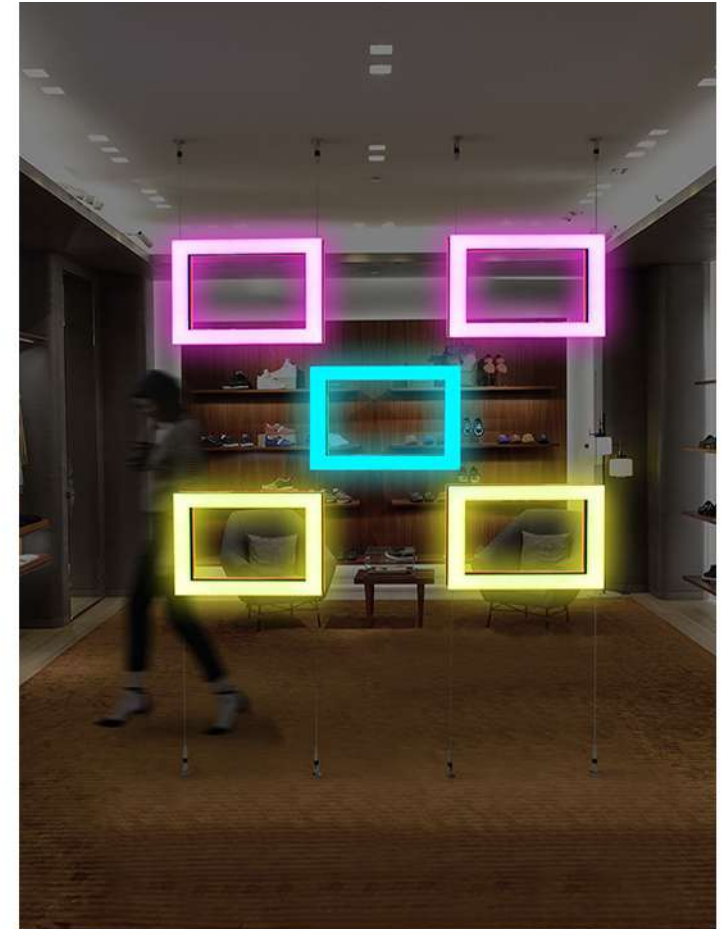


Features:

- **attract the attention of customers** within your business; - **create a customer emotion and experience;**
- **guarantee adequate and effective communication to your customers;** - **constantly update your communications;** - **communicate images, products and promotions;**
- **make your showcase more dynamic and lively.**

You're looking at **LUMINOUS FRAME**

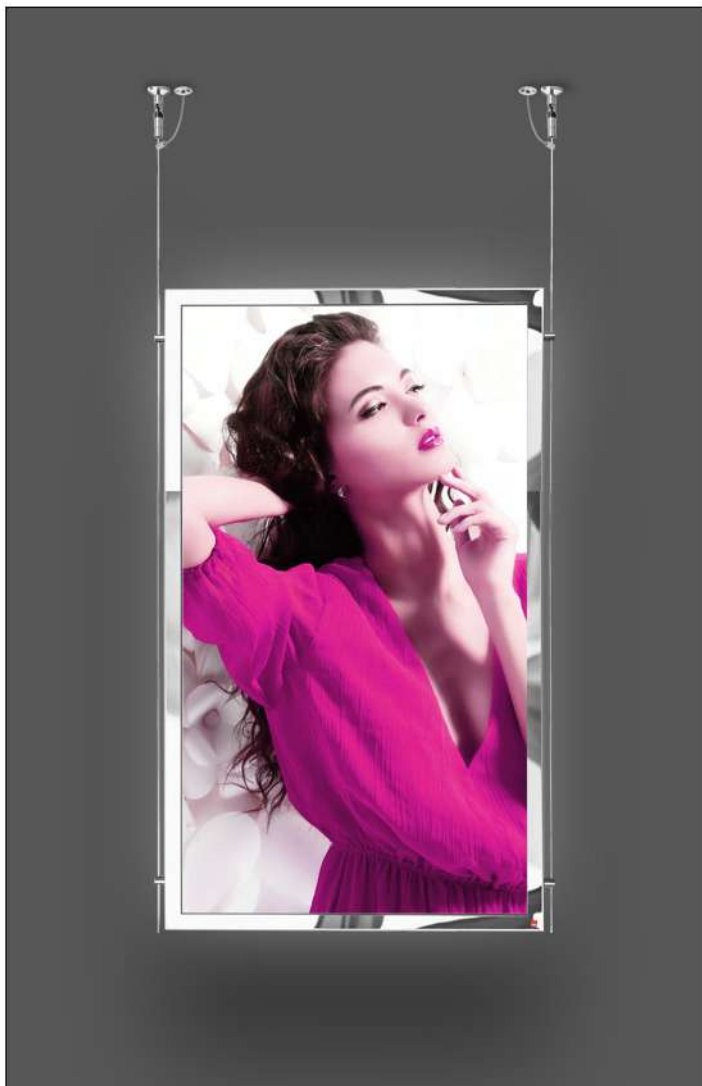
LUMINOUS FRAME RGB suspended frame (low voltage) is designed for use in all environments, such as **shops, banks, companies, restaurants, clubs, hotels, offices, waiting rooms, shopping centers...**



Features:

- **attract the attention of customers** within your business; - **create a customer emotion and experience;**
- guarantee **adequate and effective communication to your customers;** - constantly **update your communications;** - communicate **images, products and promotions;**
- make your showcase more **dynamic and lively;** - **separate rooms or internal areas** by creating plays of light.

Turn the page and choose the model that suits you best!



MEDIA CHROME®

Digital solution

MEDIA CHROME solutions allow the communication of contents such as high resolution images and videos with audio, managed by a simple schedule that can be updated locally or remotely. The MEDIA CHROME are characterized by a low voltage power supply, a further guarantee of safety of use, by a high brightness.

Available formats (horizontal and vertical):

700 Nits

42" Full HD

46" Full HD

55" 4K

65" 4K

2500 Nits

55" Full HD



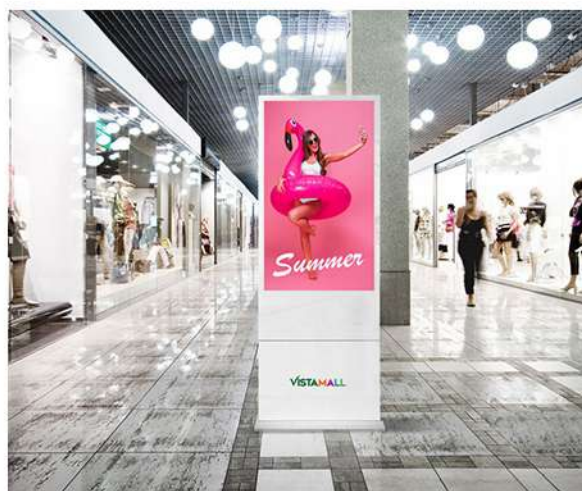
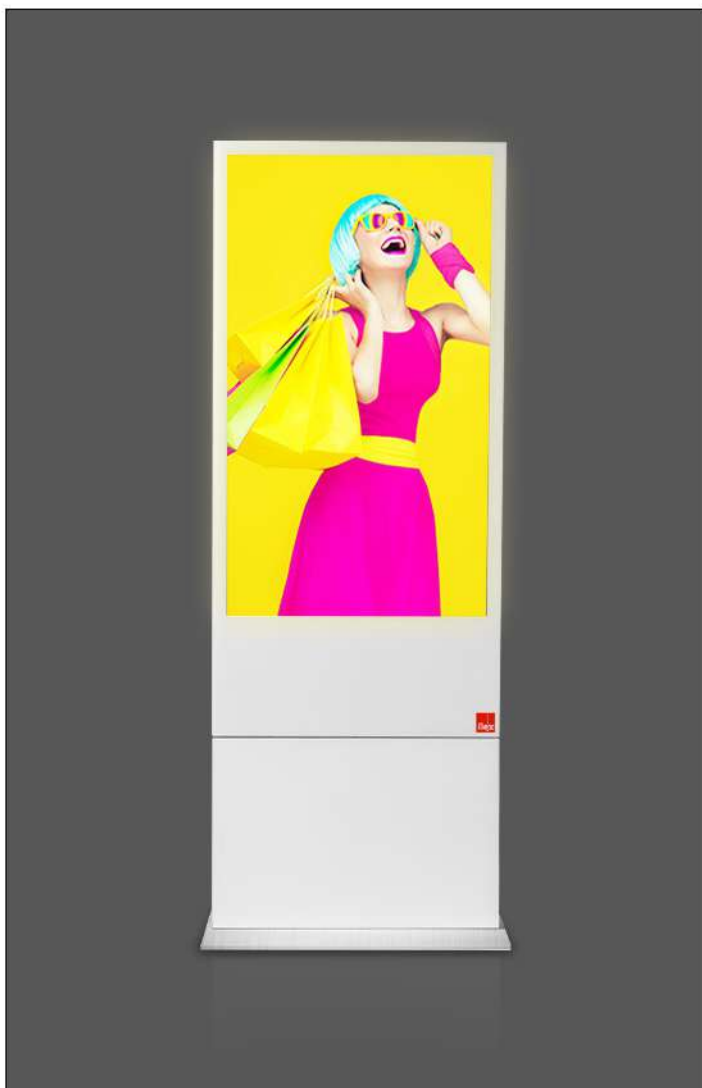
MEDIA TOTEM

Digital solution

The solution proposed by the MEDIA TOTEM self-supporting structures offers the maximum of traditional dynamic communication with high brightness, which can be further enriched by touchscreen functions or customized thanks to various software, available on request. the schedule of movies and images with Full HD audio of the totems can be updated locally or remotely.

Available formats:

700 Nits | 42" Full HD | 55" Full HD | 65" Full HD





PAGEANT

Digital solution

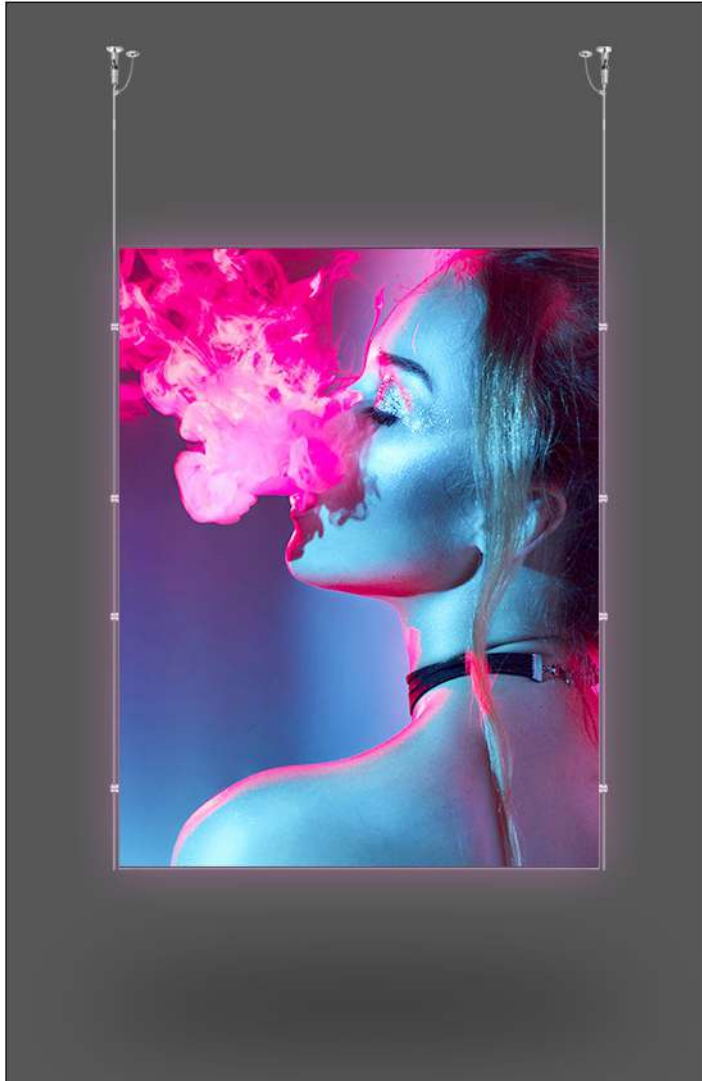
A fundamental feature of the PAGEANT is the possibility of being easily and quickly moved wherever you want. Especially in the battery version, which does not require an electrical connection, but also in the version with cable given its small size, it can be positioned anywhere, in any environment, to be used as a means of communication for your business.

Available formats:

400 Nits

12" 1280x800 px





SCREENFLEX®

Digital solution

In the world of LED screens, SCREENFLEX stands out for its characteristics. SCREENFLEX has a light and elegant design, easy to install. Loading content is quick and intuitive thanks to a dedicated app. Furthermore, the low voltage operation (24V) makes it suitable for all public environments.

Available formats: **800 Nits** (indoor use) / **4000 Nits** (showcase use)

50x100 cm;	75x150 cm;	150x150 cm;	150x50 cm.
50x150 cm;	50x50 cm;	100x75 cm;	
75x100 cm;	100x100 cm;	100x50 cm;	





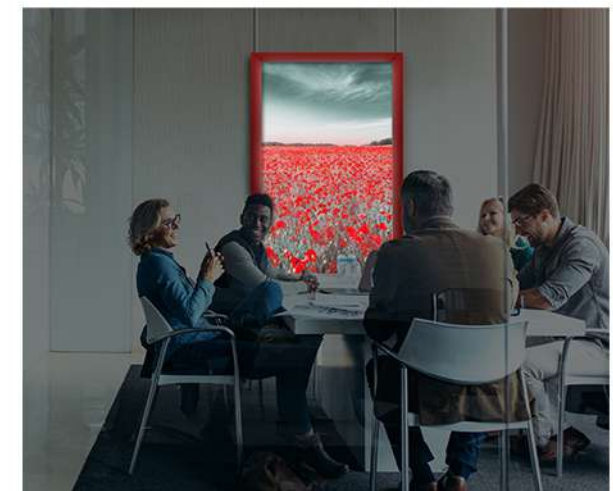
LED CHROME

Static solution

LED CHROME offer elegance combined with the best of LED technology in order to achieve the best in communication. A transparent plate combined with a magnetic strip along the sides allows easy opening and guarantees hermetic closure. Lift the magnetic frame of the LED CHROME to replace your message: open, remove, insert the new message.

Available formats (suitable for communication):

50x70 cm;	70x100cm;	100x100 cm;	140x70 cm;
50x100 cm;	70x140 cm;	100x140 cm;	140x100 cm;
70x50 cm;	100x70 cm;	100x200 cm;	200x100 cm.





MINI LED

Static solution

MINI LED offer elegance combined with the best of LED technology in order to achieve maximum communication. A transparent plate combined with a magnetic strip along the sides allows easy opening and guarantees hermetic closure. Lift the magnetic frame of the MINI LED to replace your message: open, remove, enter the new message.

Available formats (suitable for communication):

- A4 (vert. and land.); 70x50 cm;
- A3 (vert. and land.); 50x70 cm;





LUMINOUS FRAME

RGB solutions

The LUMINOUS FRAME is an intelligent frame completely manageable from the smartphone. Just install a special free App and start programming the functions. The device and the led frame will communicate via wireless. We have implemented the technology allowing you to control it remotely. You can schedule switching on and off, adjust the brightness, change the color, intensity, temperature and much more.

Available formats:

A4 vertical;	A3 landscape;	70x100 cm;
A4 landscape;	50x70 cm;	100x70 cm.
A3 vertical;	70x50 cm;	



Did you know that **FLEX** is...



THE ORIGINAL TENDIFLEX®



WAYFINDING



CUSTOMIZED SOLUTIONS



SOCIAL DISTANCE

View more on www.flex.it

contact us!



FLEX s.r.l.

Via G. Bargnani, 11

25135 Brescia (BS) - Italy

Phone +39 030 35.310.05

Fax +39 030 35.310.22

www.tendiflex.it - www.flex.it - info@flex.it